

paperfloc eco-System M33 light



We use **paper** as a sustainable raw material alternative and emit **95% less CO2** in the production of **paperfloc** than comparable EPS packaging.



Upcycling: We use unmixed production waste from cardboard manufacturing, which already consists of 89% recycled material.



paperfloc is 100% recyclable.

Technical data | paperfloc eco-System M33 light

Useable size (L x W x H; mm)	362 x 362 x 266
Useable volume (litre)	35
Weight* (g)	1,895
Thermal conductivity λ (W/(m·K))	0.039
Disposal	Paper waste
Certificate of conformity	Available

paperfloc eco-Liner M33 light

	paperfloc eco-Liner M33 light (300 mm)	paperfloc eco-Liner M33 light (400 mm)
Item number	10000545	10000546
Insulation material	loose cellulose fibres	loose cellulose fibres
Enveloping material	Barrier paper	Barrier paper
Size (L x W; mm)	1,260 x 300	1,150 x 400
Weight (g)	560	680
Percentage of LDPE per Pouch (%)	<3	<3
Quantity per packing unit	128	128
Quantity per pallet	256	256

Shipping box 33

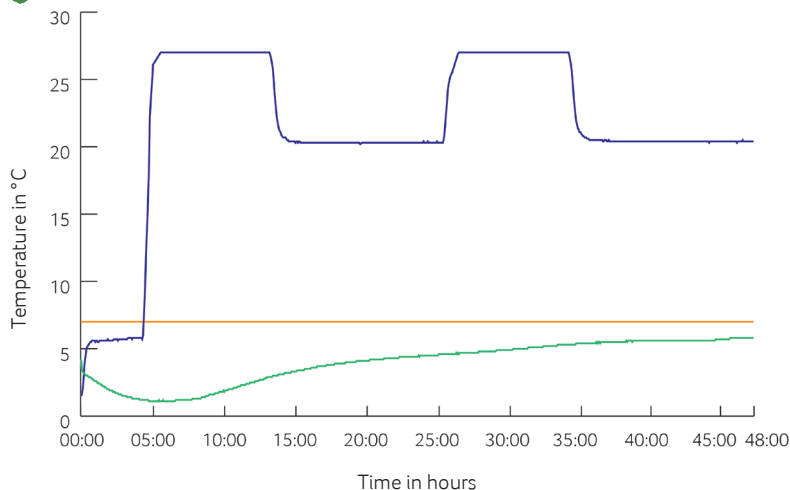
Item number	10000083
Useable size (L x W x H; mm)	392 x 392 x 281
Weight (g)	655
Construction	Fefco 0201
Quality	BE
Quantity per pallet	480

*includes 2x paperfloc eco-Liner M33 light & shipping box 33



Assembly instructions

Climate chamber test*



— Environmental temperature
 — Marking 7°C
 — Core temperature paperfloc eco-System M33 light

*Performance of the test with the paperfloc eco-System M33 light (consisting of 2x paperfloc eco-Liner M33 light & shipping box 33, filled with 4,000 g easyAkku Fresh & 9,500 g useful material)