

paperfloc eco-System M46 light



We use **paper** as a sustainable raw material alternative and emit **95% less CO2** in the production of **paperfloc** than comparable EPS packaging.



Upcycling: We use unmixed production waste from cardboard manufacturing, which already consists of 89% recycled material.



paperfloc is 100% recyclable.

Technical data | paperfloc eco-System M46 light

Useable size (L x W x H; mm)	362 x 362 x 366
Useable volume (litre)	48
Weight* (g)	2,371
Thermal conductivity λ (W/(m·K))	0.039
Disposal	Paper waste
Certificate of conformity	Available

paperfloc eco-Liner M46 light

Item number	10000549
Insulation material	loose cellulose fibres
Enveloping material	Barrier paper
Size (L x W; mm)	1,260 x 400
Weight (g)	740
Percentage of LDPE per Pouch (%)	<3
Quantity per packing unit	110
Quantity per pallet	220

Shipping box 46

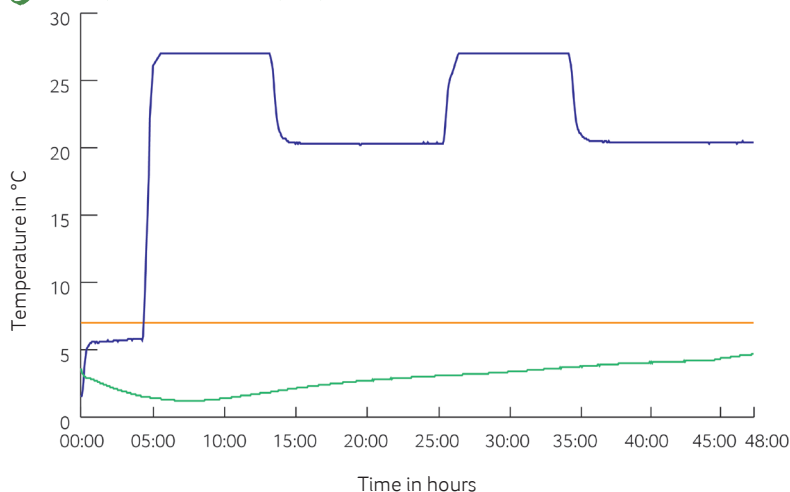
Item number	10000084
Useable size (L x W x H; mm)	392 x 392 x 381
Weight (g)	891
Construction	Fefco 0201
Quality	BC
Quantity per pallet	140

*includes 2x paperfloc eco-Liner M46 & shipping box 46



Assembly instructions

Climate chamber test*



- Environmental temperature
- Marking 7°C
- Core temperature paperfloc eco-System M46 light

*Performance of the test with the paperfloc eco-System M46 light (consisting of 2x paperfloc eco-Liner M46 light & shipping box 46, filled with 5,000 g easyAkku Fresh & 13,000 g useful material)