

paperfloc eco-Liner M51 (400mm)



We use **paper** as a sustainable raw material alternative and emit **95% less CO2** in the production of **paperfloc** than comparable EPS packaging.



Upcycling: We use unmixed production waste from cardboard manufacturing, which already consists of 89% recycled material.



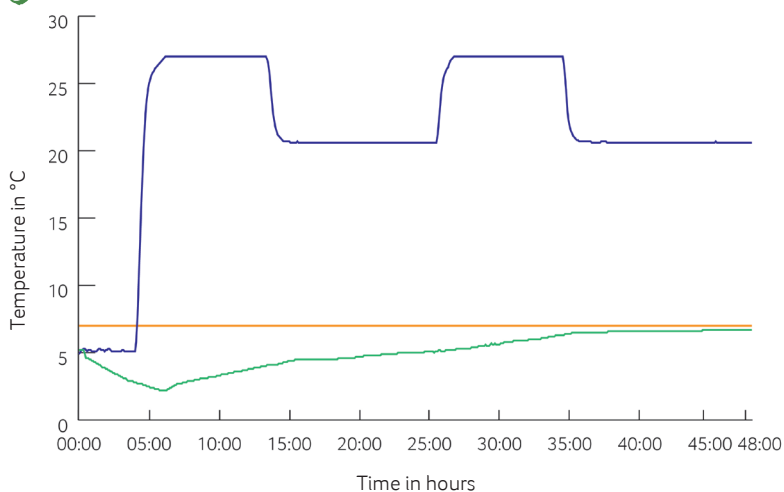
paperfloc is 100% recyclable.

| Technical data paperfloc eco-Liner M51 (400mm) | |
|--|------------------------|
| Item number | 10000553 |
| Insulation material | loose cellulose fibres |
| Enveloping material | Barrier paper |
| Size (L x B; mm) | 1,750 x 400 |
| Weight (g) | 1,005 |
| Percentage of LDPE per Pouch (%) | <3 |
| Quantity per packing unit | 78 |
| Quantity per pallet | 156 |
| Thermal conductivity λ (W/(m·K)) | 0.039 |
| Disposal | Paper waste |
| Certificate of conformity | Available |

Assembly instructions:



Climate chamber test*



- Environmental temperature
- Marking 7°C
- Core temperature paperfloc eco-System M51

*Performance of the test with the paperfloc eco-System M51 (consisting of paperfloc eco-Liner M51 (400mm), paperfloc eco-Liner M51 (600mm) & shipping box 51, filled with 6,000 g easyAkku Fresh & 18,000 g useful material)