

paperfloc eco-Liner M51 (600mm)



We use **paper** as a sustainable raw material alternative and emit **95% less CO2** in the production of **paperfloc** than comparable EPS packaging.



Upcycling: We use unmixed production waste from cardboard manufacturing, which already consists of 89% recycled material.



paperfloc is 100% recyclable.

Technical data | paperfloc eco-Liner M51 (600mm)

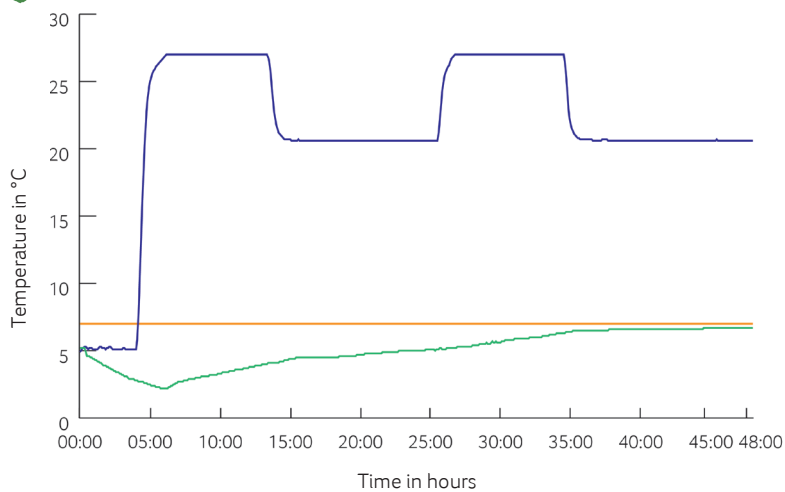
Item number	10000823
Insulation material	loose cellulose fibres
Enveloping material	Barrier paper
Size (L x B; mm)	1,350 x 600
Weight (g)	1,130
Percentage of LDPE per Pouch (%)	<3
Quantity per packing unit	75
Quantity per pallet	150
Thermal conductivity λ (W/(m·K))	0.039
Disposal	Paper waste
Certificate of conformity	Available



Assembly instructions:



Climate chamber test*



- Environmental temperature
- Marking 7°C
- Core temperature paperfloc eco-System M51

*Performance of the test with the paperfloc eco-System M51 (consisting of paperfloc eco-Liner M51 (400mm), paperfloc eco-Liner M51 (600mm) & shipping box 51, filled with 6,000 g easyAkku Fresh & 18,000 g useful material)