

# paperfloc eco-Pouch P25



We use **paper** as a sustainable raw material alternative and emit **95% less CO2** in the production of **paperfloc** than comparable EPS packaging.



**Upcycling:** We use unmixed production waste from cardboard manufacturing, which already consists of 89% recycled material.



**paperfloc** is 100% recyclable.

## Technical data | paperfloc eco-Pouch P25

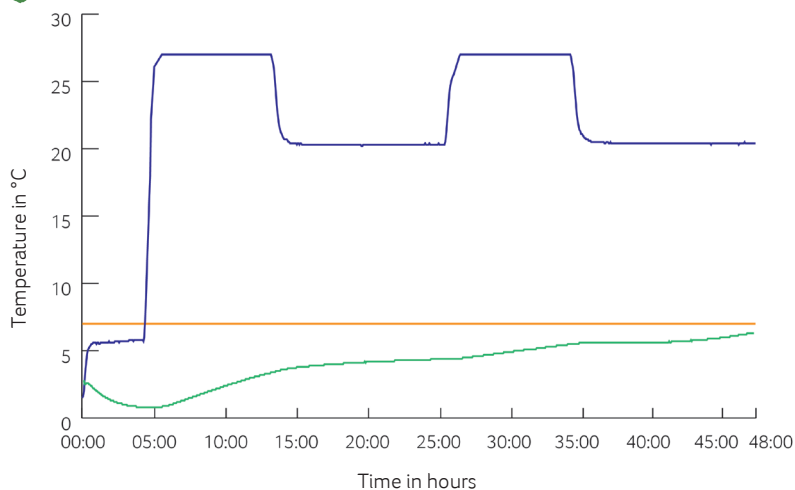
Item number	10000828
Insulation material	loose cellulose fibres
Enveloping material	Barrier paper
Size (L x W; mm)	550 x 600 (add. flap)
Weight (g)	1,050
Percentage of LDPE per Pouch (%)	<3
Quantity per packing unit	75
Quantity per pallet	150
Thermal conductivity $\lambda$ (W/(m·K))	0.039
Disposal	Paper waste
Certificate of conformity	Available



Assembly instructions:



## Climate chamber test\*



- Environmental temperature
- Marking 7°C
- Core temperature paperfloc eco-System P25

\*Performance of the test with the paperfloc eco-System P25 (consisting of paperfloc eco-Pouch P25 & shipping box 25, filled with 3,000 g easyAkku Fresh & 5,000 g useful material)