

paperfloc eco-Pouch P25 (frozen shipping)



We use **paper** as a sustainable raw material alternative and emit **95% less CO2** in the production of **paperfloc** than comparable EPS packaging.



Upcycling: We use unmixed production waste from cardboard manufacturing, which already consists of 89% recycled material.



paperfloc is 100% recyclable.

Technical data | paperfloc eco-Pouch P25 (frozen shipping)

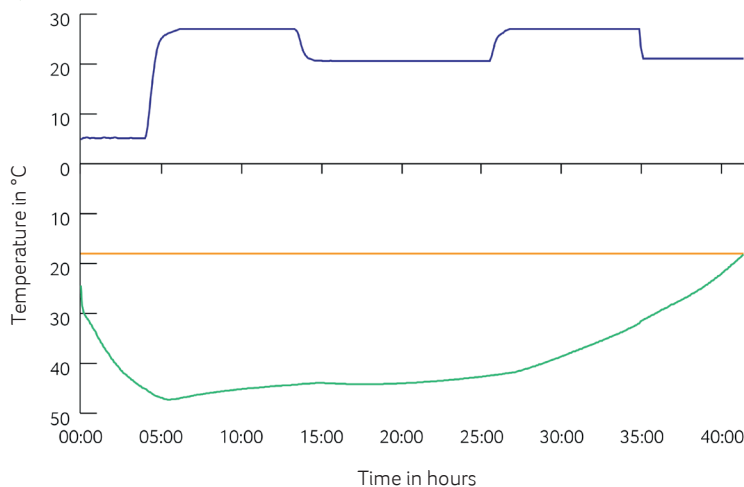
Item number	10000829
Insulation material	loose cellulose fibres
Enveloping material	Barrier paper
Size (L x W; mm)	550 x 600 (add. flap)
Weight (g)	1,470
Percentage of LDPE per Pouch (%)	<3
Quantity per packing unit	66
Quantity per pallet	132
Thermal conductivity λ (W/(m·K))	0.039
Disposal	Paper waste
Certificate of conformity	Available



Assembly instructions:



Climate chamber test*



- Environmental temperature
- Marking -18°C
- Core temperature paperfloc eco-System P25 (frozen shipping)

*Performance of the test with the paperfloc eco-System P25 (DF) (consisting of paperfloc eco-Pouch P25 (DF) & shipping box 25, filled with 6,000 g dry ice in Dry Ice Extender & 4,000 g useful material)