

paperfloc eco-System M26 (frozen shipping)

Technical data | paperfloc eco-System M26 (DF)

Usable size (L x W x H; mm)	352 x 352 x 190
Useable volume (litre)	24
Weight* (g)	2,735
Thermal conductivity λ (W/(m·K))	0.039
Disposal	Paper waste
Certificate of conformity	Available

paperfloc eco-Liner M26 (DF)

Item number	10000066
Insulation material	loose cellulose fibres
Enveloping material	Barrier paper
Size (L x W; mm)	1,260 x 400
Weight (g)	990
Percentage of LDPE per Liner (%)	<3
Quantity per packing unit	104
Quantity per pallet	208

Shipping box 26 (DF)

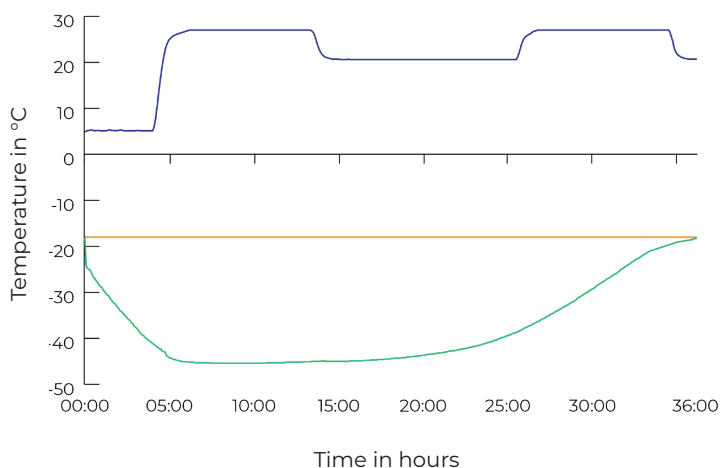
Item number	10000505
Usable size (L x W x H; mm)	392 x 392 x 230
Weight (g)	755
Construction	Fefco 0201
Quality	EB
Quantity per pallet	400

*includes 2x paperfloc eco-Liner M26 (DF) & shipping box 26 (DF)



Assembly instructions:

Climate chamber test*:



- Environmental temperature
- Marking -18°C
- Core temperature paperfloc eco-System M26 (DF)

*Performance of the test with paperfloc eco-System M26 (DF) (consisting of 2x paperfloc eco-Liner M26 (DF) & shipping box 26 (DF), filled with 4,500 g dry ice in Dry Ice Extender & 4,000 g useful material)