

paperfloc eco-System M51



We use **paper** as a sustainable raw material alternative and emit **95% less CO2** in the production of **paperfloc** than comparable EPS packaging.



Upcycling: We use unmixed production waste from cardboard manufacturing, which already consists of 89% recycled material.



paperfloc is 100% recyclable.

Technical data | paperfloc eco-System M51

Useable size (L x W x H; mm)	560 x 360 x 250
Useable volume (litre)	51
Weight* (g)	3,004
Thermal conductivity λ (W/(m·K))	0.039
Disposal	Paper waste
Certificate of conformity	Available

paperfloc eco-Liner M51

	paperfloc eco-Liner M51 (400mm)	paperfloc eco-Liner M51 (600mm)
Item number	10000553	10000823
Insulation material	loose cellulose fibres	loose cellulose fibres
Enveloping material	Barrier paper	Barrier paper
Size (L x W; mm)	1,750 x 400	1,350 x 600
Weight (g)	1,005	1,130
Percentage of LDPE per Pouch (%)	<3	<3
Quantity per packing unit	78	75
Quantity per pallet	156	150

Shipping box 51

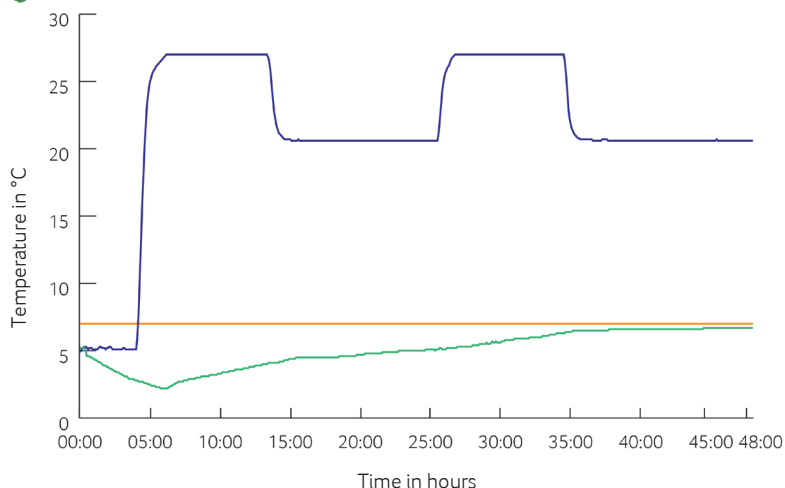
Item number	10000108
Useable size (L x W x H; mm)	590 x 390 x 280
Weight (g)	869
Construction	Fefco 0201
Quality	BC
Quantity per pallet	280

*includes 1x paperfloc eco-Liner M51 (400mm), 1x paperfloc eco-Liner M51 (600mm) & shipping box 51



Assembly instructions

Climate chamber test*



— Environmental temperature
 — Marking 7°C
 — Core temperature paperfloc eco-System M51

*Performance of the test with the paperfloc eco-System M51 (consisting of paperfloc eco-Liner M51 (400mm), paperfloc eco-Liner M51 (600mm) & shipping box 51, filled with 6,000 g easyAkku Fresh & 18,000 g useful material)