

paperfloc eco-System P25 (frozen shipping)



We use **paper** as a sustainable raw material alternative and emit **95% less CO2** in the production of **paperfloc** than comparable EPS packaging.



Upcycling: We use unmixed production waste from cardboard manufacturing, which already consists of 89% recycled material.



paperfloc is 100% recyclable.

Technical data | paperfloc eco-System P25 (frozen shipping)

Useable volume (litre)	25
Weight (g)	2,360
Thermal conductivity λ (W/(m·K))	0.039
Disposal	Paper waste
Certificate of conformity	Available

paperfloc eco-Pouch P25 (frozen shipping)

Item number	10000829
Insulation material	loose cellulose fibres
Enveloping material	Barrier paper
Size (L x W; mm)	550 x 600 (add. flap)
Weight (g)	1,470
Percentage of LDPE per Pouch (%)	<3
Quantity per packing unit	66
Quantity per pallet	132

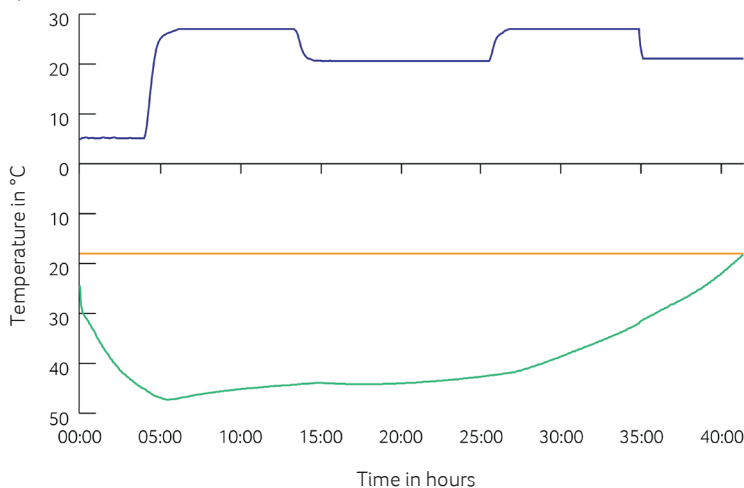
Shipping box 25

Item number	10000093
Useable size (L x W x H; mm)	520 x 465 x 234
Weight (g)	890
Construction	Fefco 0201
Quality	BE
Quantity per pallet	220



Assembly instructions:

Climate chamber test*



— Environmental temperature

— Marking -18°C

— Core temperature paperfloc eco-System P25 (frozen shipping)

*Performance of the test with the paperfloc eco-System P25 (DF) (consisting of paperfloc eco-Pouch P25 (DF) & shipping box 25, filled with 6,000 g dry ice in Dry Ice Extender & 4,000 g useful material)