

paperfloc-Liner M33



We use **paper** as a sustainable raw material alternative and emit **95% less CO2** in the production of **paperfloc** than comparable EPS packaging.



Upcycling: We use unmixed production waste from cardboard manufacturing, which already consists of 89% recycled material.



paperfloc is 100% recyclable.

Technical data | paperfloc-Liner M33

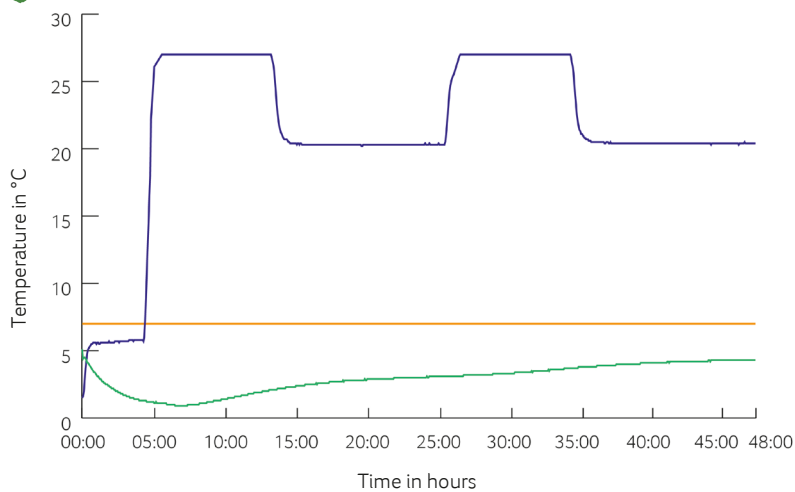
Item number	pF-M-0002
Insulation material	loose cellulose fibres
Enveloping material	LDPE
Size (L x B; mm)	1,400 x 400
Weight (g)	800
Percentage of LDPE per Pouch (%)	<5
Quantity per packing unit	90
Quantity per pallet	180
Thermal conductivity λ (W/(m·K))	0.039
Disposal	Paper waste
Certificate of conformity	Available



Assembly instructions:



Climate chamber test*



- Environmental temperature
- Marking 7°C
- Core temperature paperfloc-System M33

*Performance of the test with the paperfloc-System M33 (consisting of 2x paperfloc-Liner M33 & shipping box 33, filled with 4,000 g easyAkku Fresh & 9,500 g useful material)