

paperfloc-Pouch P15 ready-made (frozen shipping)



We use **paper** as a sustainable raw material alternative and emit **95% less CO2** in the production of **paperfloc** than comparable EPS packaging.



Upcycling: We use unmixed production waste from cardboard manufacturing, which already consists of 89% recycled material.



paperfloc is 100% recyclable.

Technical data | paperfloc-Pouch P15 ready-made (frozen shipping)

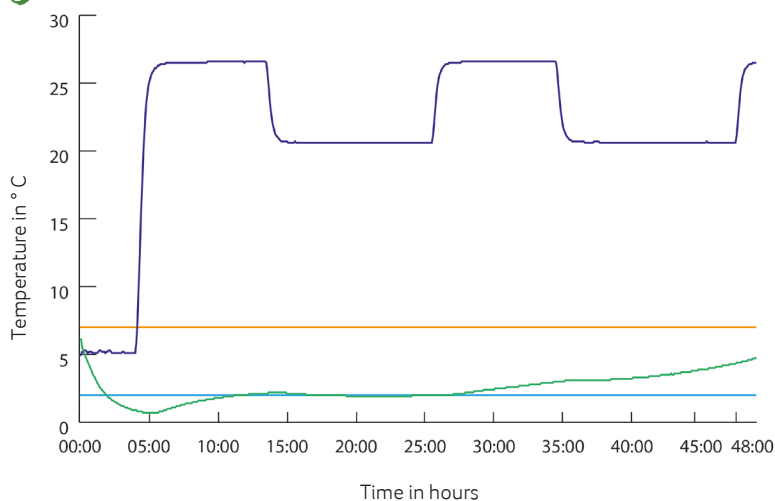
| | |
|--|------------------------|
| Item number | pf-P-rmU-0041 |
| Insulation material | loose cellulose fibres |
| Enveloping material | LDPE |
| Size (L x W; mm) | 540 x 400 (add. flap) |
| Weight (g) | 950 |
| Percentage of LDPE per Pouch (%) | <5 |
| Quantity per packing unit | 81 |
| Quantity per pallet | 162 |
| Thermal conductivity λ (W/(m·K)) | 0.039 |
| Disposal | Paper waste |
| Certificate of conformity | Available |



Assembly instructions:



Climate chamber test*:



- Core temperature paperfloc-system P15
- Environmental temperature
- Marking 7° C
- Marking 2° C

*Performance of the test with the paperfloc-System P15 (consisting of paperfloc-Pouch P15 & shipping box 15, filled with 2.000 g easyAkku Fresh & 3.000 g useful material)