

# paperfloc-Pouch P25 ready-made



We use **paper** as a sustainable raw material alternative and emit **95% less CO2** in the production of **paperfloc** than comparable EPS packaging.



**Upcycling:** We use unmixed production waste from cardboard manufacturing, which already consists of 89% recycled material.



**paperfloc** is 100% recyclable.

## Technical data | paperfloc-Pouch P25 ready-made

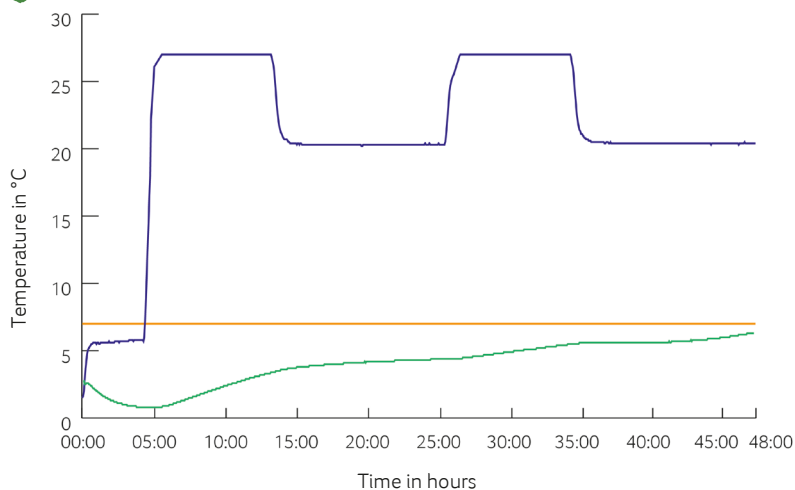
Item number	pf-P-rmU-0013
Insulation material	loose cellulose fibres
Enveloping material	LDPE
Size (L x W; mm)	540 x 600 (add. flap)
Weight (g)	1,010
Percentage of LDPE per Pouch (%)	<5
Quantity per packing unit	60
Quantity per pallet	120
Thermal conductivity $\lambda$ (W/(m·K))	0.039
Disposal	Paper waste
Certificate of conformity	Available



Assembly instructions:



## Climate chamber test\*



- Environmental temperature
- Marking 7°C
- Core temperature paperfloc-System P25

\*Performance of the test with the paperfloc-System P25 (consisting of paperfloc-Pouch P25 & shipping box 25, filled with 3,000 g easyAkku Fresh & 5,000 g useful material)