

paperfloc-Pouch P5 ready-made



We use **paper** as a sustainable raw material alternative and emit **95% less CO2** in the production of **paperfloc** than comparable EPS packaging.



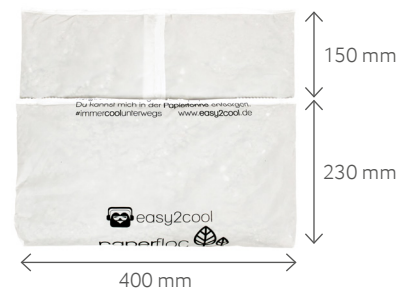
Upcycling: We use unmixed production waste from cardboard manufacturing, which already consists of 89% recycled material.



paperfloc is 100% recyclable.

Technical data | paperfloc-Pouch P5 ready-made

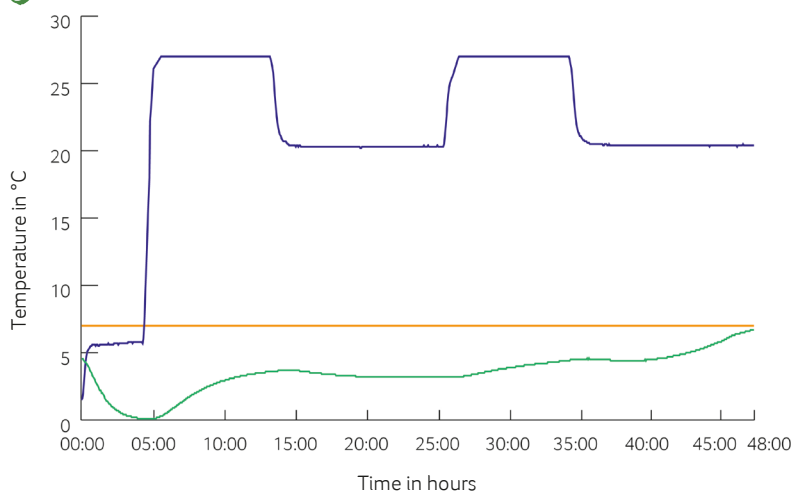
Item number	pf-P-rmU-0001
Insulation material	loose cellulose fibres
Enveloping material	LDPE
Size (L x W; mm)	230 x 400 (add. flap)
Weight (g)	390
Percentage of LDPE per Pouch (%)	<5
Quantity per packing unit	206
Quantity per pallet	412
Thermal conductivity λ (W/(m·K))	0.039
Disposal	Paper waste
Certificate of conformity	Available



Assembly instructions:



Climate chamber test*



- Environmental temperature
- Marking 7°C
- Core temperature paperfloc-System P5

*Performance of the test with the paperfloc-System P5 (consisting of paperfloc-Pouch P5 & shipping box 5, filled with 1,320 g easyAkku Fresh & 500 g useful material)