

# paperfloc-Pouch P5



We use **paper** as a sustainable raw material alternative and emit **95% less CO2** in the production of **paperfloc** than comparable EPS packaging.



**Upcycling:** We use unmixed production waste from cardboard manufacturing, which already consists of 89% recycled material.



**paperfloc** is 100% recyclable.

## Technical data | paperfloc-Pouch P5

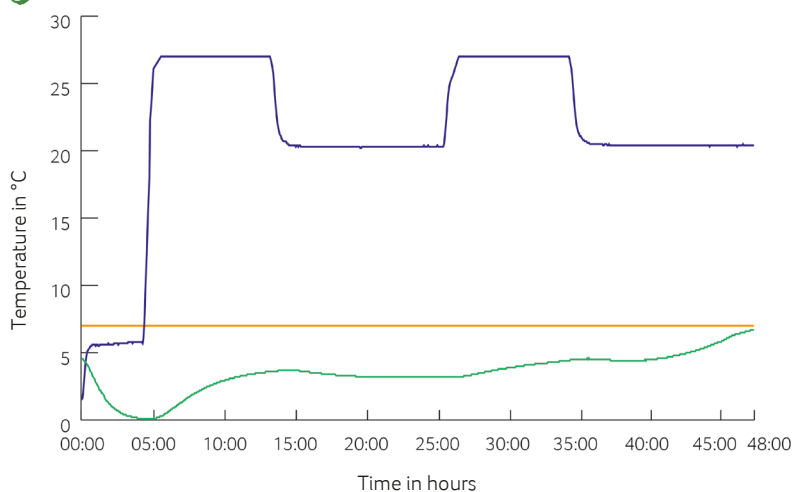
Item number	pf-P-0003
Insulation material	loose cellulose fibres
Enveloping material	LDPE
Size* (L x W; mm)	300 x 400
Weight (g)	390
Percentage of LDPE per Pouch (%)	<5
Quantity per packing unit	206
Quantity per pallet	412
Thermal conductivity $\lambda$ (W/(m·K))	0.039
Disposal	Paper waste
Certificate of conformity	Available



\*Delivery takes place as a liner for self-bonding, see **assembly instructions:**



## Climate chamber test\*



- Environmental temperature
- Marking 7°C
- Core temperature paperfloc-System P5

\*Performance of the test with the paperfloc-System P5 (consisting of paperfloc-Pouch P5 & shipping box 5, filled with 1,320 g easyAkku Fresh & 500 g useful material)