

paperfloc-System P10



We use **paper** as a sustainable raw material alternative and emit **95% less CO2** in the production of **paperfloc** than comparable EPS packaging.



Upcycling: We use unmixed production waste from cardboard manufacturing, which already consists of 89% recycled material.



paperfloc is 100% recyclable.

Technical data | paperfloc-System P10

Useable volume (litre)	10
Weight (g)	905
Thermal conductivity λ (W/(m·K))	0.039
Disposal	Paper waste
Certificate of conformity	Available

paperfloc-Pouch P10 ready-made

Item number	pf-P-rmU-0012
Insulation material	loose cellulose fibres
Enveloping material	LDPE
Size (L x W; mm)	380 x 400 (add. flap)
Weight (g)	510
Percentage of LDPE per Pouch (%)	<5
Quantity per packing unit	144
Quantity per pallet	288

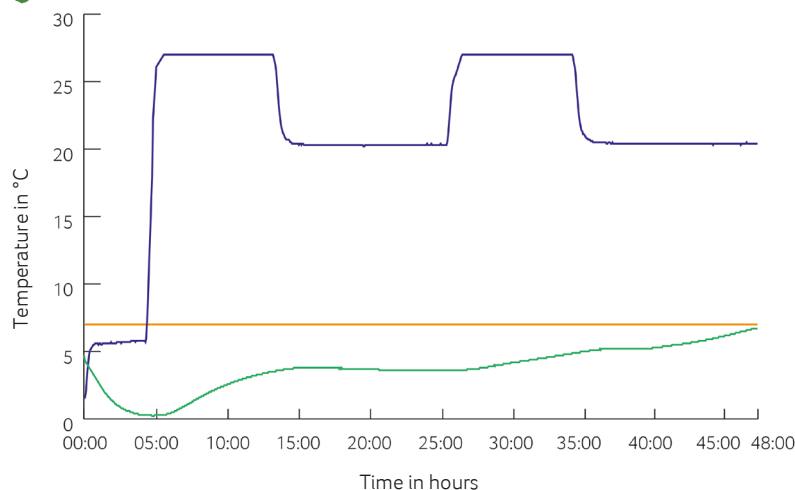
Shipping box 10

Item number	pf-K-0002
Useable size (L x W x H; mm)	352 x 312 x 180
Weight (g)	395
Construction	Fefco 0201
Quality	BE
Quantity per pallet	480



Assembly instructions:

Climate chamber test*



- Environmental temperature
- Marking 7°C
- Core temperature paperfloc-System P10

*Performance of the test with the paperfloc-System P10 (consisting of paperfloc-Pouch P10 & shipping box 10, filled with 1,320 g easyAkku Fresh & 1,000 g useful material)