

# paperfloc-System P10



We use **paper** as a sustainable raw material alternative and emit **95% less CO2** in the production of **paperfloc** than comparable EPS packaging.



**Upcycling:** We use unmixed production waste from cardboard manufacturing, which already consists of 89% recycled material.



**paperfloc** is 100% recyclable.

## Technical data | paperfloc-System P10

Useable volume (litre)	10
Weight (g)	905
Thermal conductivity $\lambda$ (W/(m·K))	0.039
Disposal	Paper waste
Certificate of conformity	Available

## paperfloc-Pouch P10

Item number	pf-P-0002
Insulation material	loose cellulose fibres
Enveloping material	LDPE
Size* (L x W; mm)	450 x 400
Weight (g)	510
Percentage of LDPE per Pouch (%)	<5
Quantity per packing unit	144
Quantity per pallet	288

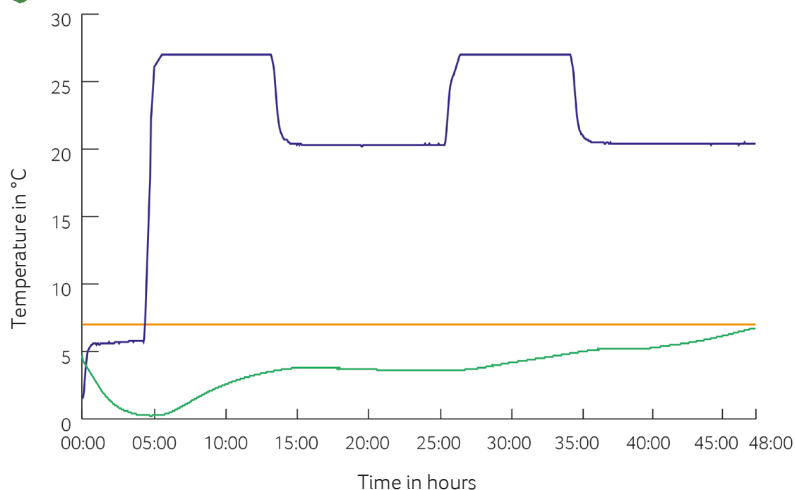
## Shipping box 10

Item number	pf-K-0002
Useable size (L x W x H; mm)	352 x 312 x 180
Weight (g)	395
Construction	Fefco 0201
Quality	BE
Quantity per pallet	480



\*Delivery takes place as a liner for self-bonding, see **assembly instructions**:

## Climate chamber test\*



— Environmental temperature  
 — Marking 7°C  
 — Core temperature paperfloc-System P10

\*Performance of the test with the paperfloc-System P10 (consisting of paperfloc-Pouch P10 & shipping box 10, filled with 1,320 g easyAkku Fresh & 1,000 g useful material)