

# paperfloc-System P25



We use **paper** as a sustainable raw material alternative and emit **95% less CO<sub>2</sub>** in the production of **paperfloc** than comparable EPS packaging.



**Upcycling:** We use unmixed production waste from cardboard manufacturing, which already consists of 89% recycled material.



**paperfloc** is 100% recyclable.

## Technical data | paperfloc-System P25

Useable volume (litre)	25
Weight (g)	1,900
Thermal conductivity $\lambda$ (W/(m·K))	0.039
Disposal	Paper waste
Certificate of conformity	Available

## paperfloc-Pouch P25 ready-made

Item number	pf-P-rmU-0013
Insulation material	loose cellulose fibres
Enveloping material	LDPE
Size (L x W; mm)	540 x 600 (add. flap)
Weight (g)	1,010
Percentage of LDPE per Pouch (%)	<5
Quantity per packing unit	60
Quantity per pallet	120

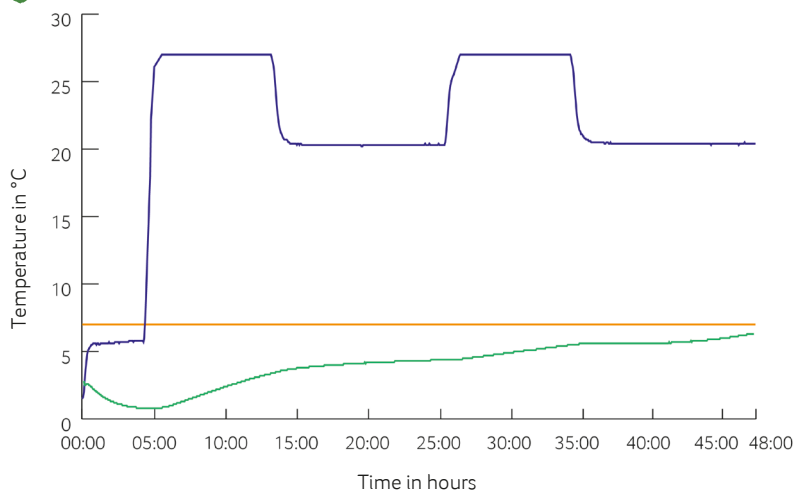
## Shipping box 25

Item number	pf-K-0041
Useable size (L x W x H; mm)	520 x 465 x 234
Weight (g)	890
Construction	Fefco 0201
Quality	BE
Quantity per pallet	220



Assembly instructions:

## Climate chamber test\*



— Environmental temperature  
 — Marking 7°C  
 — Core temperature paperfloc-System P25

\*Performance of the test with the paperfloc-System P25 (consisting of paperfloc-Pouch P25 & shipping box 25, filled with 3,000 g easyAkku Fresh & 5,000 g useful material)