

# paperfloc-System P3



We use **paper** as a sustainable raw material alternative and emit **95% less CO2** in the production of **paperfloc** than comparable EPS packaging.



**Upcycling:** We use unmixed production waste from cardboard manufacturing, which already consists of 89% recycled material.



**paperfloc** is 100% recyclable.

## Technical data | paperfloc-System P3

Useable volume (litre)	3
Weight (g)	423
Thermal conductivity $\lambda$ (W/(m·K))	0.039
Disposal	Paper waste
Certificate of conformity	Available

## paperfloc-Pouch P3

Item number	pf-P-0026
Insulation material	loose cellulose fibres
Enveloping material	LDPE
Size* (L x W; mm)	300 x 300
Weight (g)	262
Percentage of LDPE per Pouch (%)	<5
Quantity per packing unit	336
Quantity per pallet	672

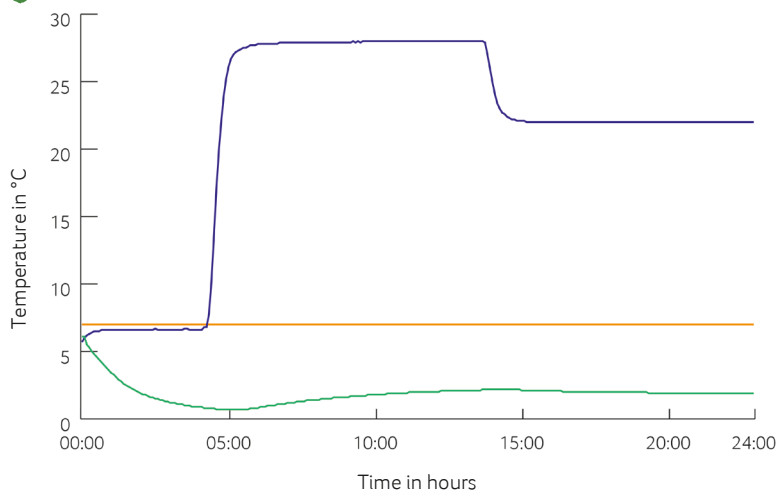
## Shipping box 3

Item number	pf-K-0053
Useable size (L x W x H; mm)	280 x 240 x 120
Weight (g)	161
Construction	Fefco 0201
Quality	B
Quantity per pallet	1.300



\*Delivery takes place as a liner for self-bonding, see **assembly instructions**:

## Climate chamber test\*



— Environmental temperature  
 — Marking 7°C  
 — Core temperature paperfloc-System P3

\*Performance of the test with the paperfloc-System P3 (consisting of paperfloc-Pouch P3 & shipping box 3, filled with 880 g easyAkku Fresh & 500 g useful material)