

paperfloc-System P5



We use **paper** as a sustainable raw material alternative and emit **95% less CO2** in the production of **paperfloc** than comparable EPS packaging.



Upcycling: We use unmixed production waste from cardboard manufacturing, which already consists of 89% recycled material.



paperfloc is 100% recyclable.

Technical data | paperfloc-System P5

Useable volume (litre)	5
Weight (g)	584
Thermal conductivity λ (W/(m·K))	0.039
Disposal	Paper waste
Certificate of conformity	Available

paperfloc-Pouch P5

Item number	pf-P-0003
Insulation material	loose cellulose fibres
Enveloping material	LDPE
Size* (L x W; mm)	300 x 400
Weight (g)	390
Percentage of LDPE per Pouch (%)	<5
Quantity per packing unit	206
Quantity per pallet	412

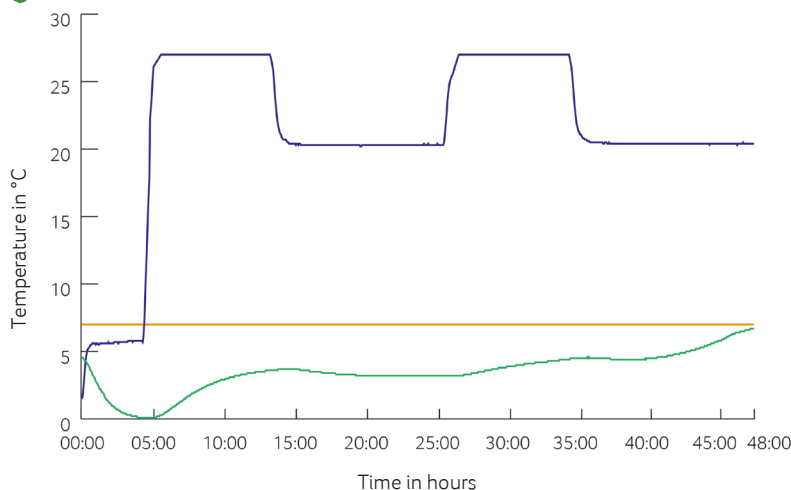
Shipping box 5

Item number	pf-K-0001
Useable size (L x W x H; mm)	352 x 242 x 160
Weight (g)	194
Construction	Fefco 0201
Quality	B
Quantity per pallet	1,300



*Delivery takes place as a liner for self-bonding, see **assembly instructions**:

Climate chamber test*



— Environmental temperature
 — Marking 7°C
 — Core temperature paperfloc-System P5

*Performance of the test with the paperfloc-System P5 (consisting of paperfloc-Pouch P5 & shipping box 5, filled with 1,320 g easyAkku Fresh & 500 g useful material)