

paperfloc eco-Liner M46



We use **paper** as a sustainable raw material alternative and emit **95% less CO2** in the production of **paperfloc** than comparable EPS packaging.



Upcycling: We use unmixed production waste from cardboard manufacturing, which already consists of 89% recycled material.



paperfloc is 100% recyclable.

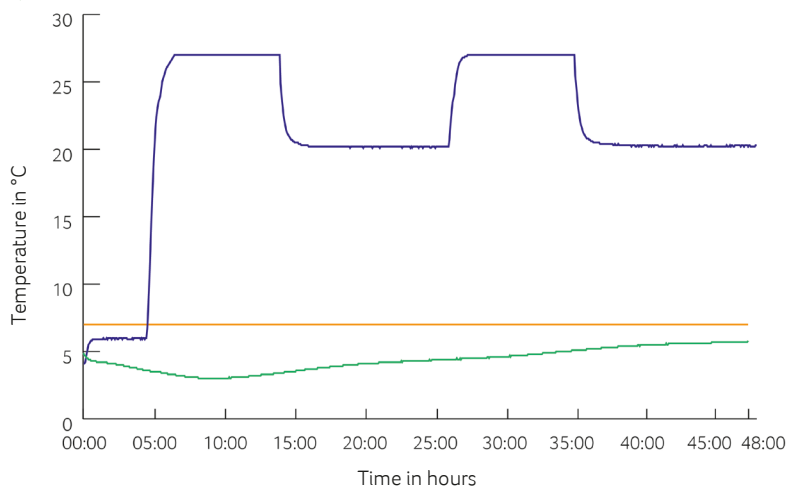
Technical data | paperfloc eco-Liner M46

Item number	pfe-M-0006
Insulation material	loose cellulose fibres
Enveloping material	Barrier paper
Size (L x B; mm)	1,600 x 400
Weight (g)	930
Percentage of LDPE per Pouch (%)	<3
Quantity per packing unit	84
Quantity per pallet	168
Thermal conductivity λ (W/(m·K))	0.039
Disposal	Paper waste
Certificate of conformity	Available

Assembly instructions:



Climate chamber test*



- Environmental temperature
- Marking 7°C
- Core temperature paperfloc eco-System M46

*Performance of the test with the paperfloc eco-System M46 (consisting of 2x paperfloc eco-Liner M46 & shipping box 46, filled with 5,000 g easyAkku Fresh & 13,000 g useful material)