

# paperfloc eco-Pouch P15



We use **paper** as a sustainable raw material alternative and emit **95% less CO2** in the production of **paperfloc** than comparable EPS packaging.



**Upcycling:** We use unmixed production waste from cardboard manufacturing, which already consists of 89% recycled material.



**paperfloc** is 100% recyclable.

## Technical data | paperfloc eco-Pouch P15

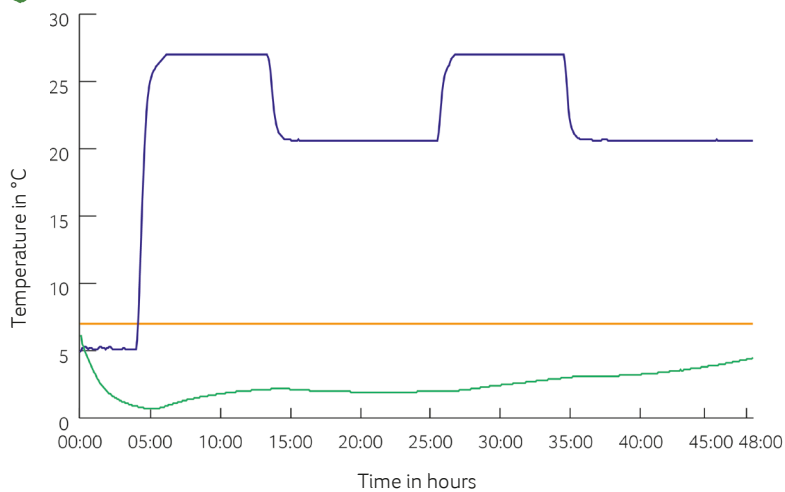
Item number	pfe-P-0001
Insulation material	loose cellulose fibres
Enveloping material	Barrier paper
Size* (L x W; mm)	600 x 400
Weight (g)	740
Percentage of LDPE per Pouch (%)	<3
Quantity per packing unit	110
Quantity per pallet	220
Thermal conductivity $\lambda$ (W/(m·K))	0.039
Disposal	Paper waste
Certificate of conformity	Available



\*Delivery takes place as a liner for self-bonding, see **assembly instructions:**



## Climate chamber test\*



- Environmental temperature
- Marking 7°C
- Core temperature paperfloc eco-System P15

\*Performance of the test with the paperfloc eco-System P15 (consisting of paperfloc eco-Pouch P15 & shipping box 15, filled with 2,000 g easyAkku Fresh & 3,000 g useful material)