

# paperfloc eco-System M26



We use **paper** as a sustainable raw material alternative and emit **95% less CO2** in the production of **paperfloc** than comparable EPS packaging.



**Upcycling:** We use unmixed production waste from cardboard manufacturing, which already consists of 89% recycled material.



**paperfloc** is 100% recyclable.

## Technical data | paperfloc eco-System M26

Useable size (L x W x H; mm)	362 x 362 x 200
Useable volume (litre)	26
Weight* (g)	2,086
Thermal conductivity $\lambda$ (W/(m·K))	0.039
Disposal	Paper waste
Certificate of conformity	Available

## paperfloc eco-Liner M26

Item number	pfe-M-0001
Insulation material	loose cellulose fibres
Enveloping material	Barrier paper
Size (L x W; mm)	1,260 x 400
Weight (g)	740
Percentage of LDPE per Pouch (%)	<3
Quantity per packing unit	110
Quantity per pallet	220

## Shipping box 26

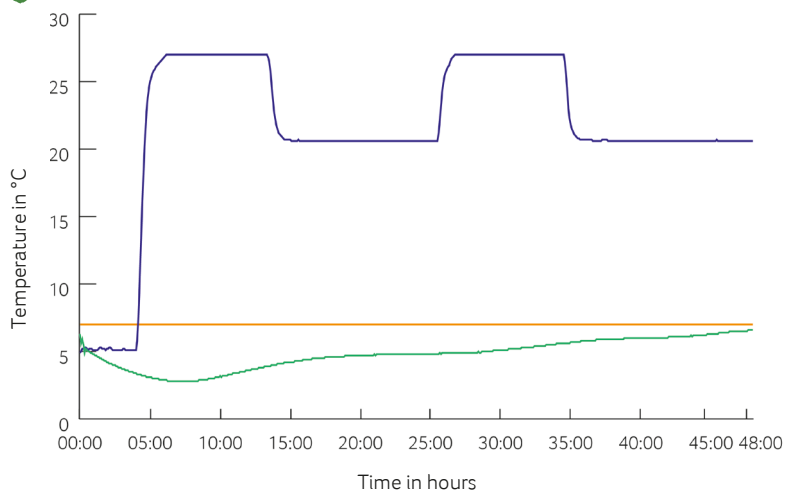
Item number	pf-K-0004
Useable size (L x W x H; mm)	392 x 392 x 230
Weight (g)	606
Construction	Fefco 0201
Quality	BE
Quantity per pallet	480

\*includes 2x paperfloc eco-Liner M26 & shipping box 26



**Assembly instructions**

## Climate chamber test\*



— Environmental temperature  
 — Marking 7°C  
 — Core temperature paperfloc eco-System M26

\*Performance of the test with the paperfloc eco-System M26 (consisting of 2x paperfloc eco-Liner M26 & shipping box 26, filled with 3,000 g easyAkku Fresh & 6,000 g useful material)