

# paperfloc eco-System M33



We use **paper** as a sustainable raw material alternative and emit **95% less CO<sub>2</sub>** in the production of **paperfloc** than comparable EPS packaging.



**Upcycling:** We use unmixed production waste from cardboard manufacturing, which already consists of 89% recycled material.



**paperfloc** is 100% recyclable.

## Technical data | paperfloc eco-System M33

Useable size (L x W x H; mm)	362 x 362 x 251
Useable volume (litre)	33
Weight* (g)	2,295
Thermal conductivity $\lambda$ (W/(m·K))	0.039
Disposal	Paper waste
Certificate of conformity	Available

## paperfloc eco-Liner M33

Item number	pfe-M-0002
Insulation material	loose cellulose fibres
Enveloping material	Barrier paper
Size (L x W; mm)	1,400 x 400
Weight (g)	820
Percentage of LDPE per Pouch (%)	<3
Quantity per packing unit	90
Quantity per pallet	180

## Shipping box 33

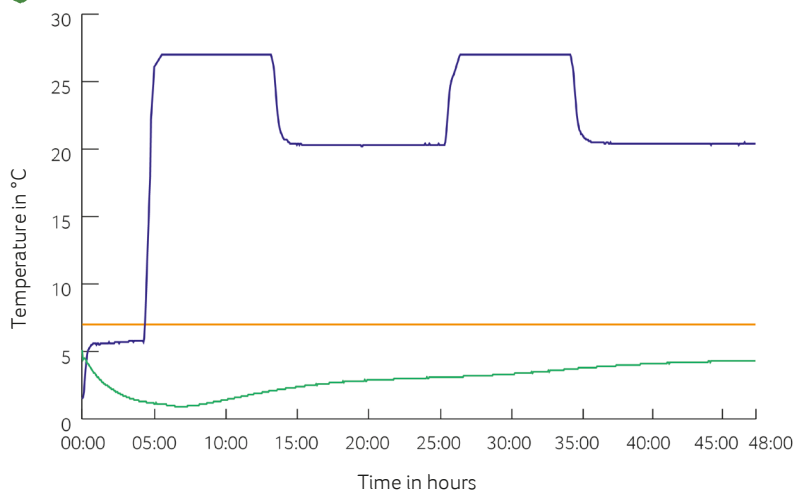
Item number	pf-K-0005
Useable size (L x W x H; mm)	392 x 392 x 281
Weight (g)	655
Construction	Fefco 0201
Quality	BE
Quantity per pallet	480

\*includes 2x paperfloc eco-Liner M33 & shipping box 33



**Assembly instructions**

## Climate chamber test\*



— Environmental temperature  
 — Marking 7°C  
 — Core temperature paperfloc eco-System M33

\*Performance of the test with the paperfloc eco-System M33 (consisting of 2x paperfloc eco-Liner M33 & shipping box 33, filled with 4,000 g easyAkku Fresh & 9,500 g useful material)