

# paperfloc eco-System M46



We use **paper** as a sustainable raw material alternative and emit **95% less CO<sub>2</sub>** in the production of **paperfloc** than comparable EPS packaging.



**Upcycling:** We use unmixed production waste from cardboard manufacturing, which already consists of 89% recycled material.



**paperfloc** is 100% recyclable.

## Technical data | paperfloc eco-System M46

Useable size (L x W x H; mm)	362 x 362 x 351
Useable volume (litre)	46
Weight* (g)	2,751
Thermal conductivity $\lambda$ (W/(m·K))	0.039
Disposal	Paper waste
Certificate of conformity	Available

## paperfloc eco-Liner M46

Item number	pfe-M-0006
Insulation material	loose cellulose fibres
Enveloping material	Barrier paper
Size (L x W; mm)	1,600 x 400
Weight (g)	930
Percentage of LDPE per Pouch (%)	<3
Quantity per packing unit	84
Quantity per pallet	168

## Shipping box 46

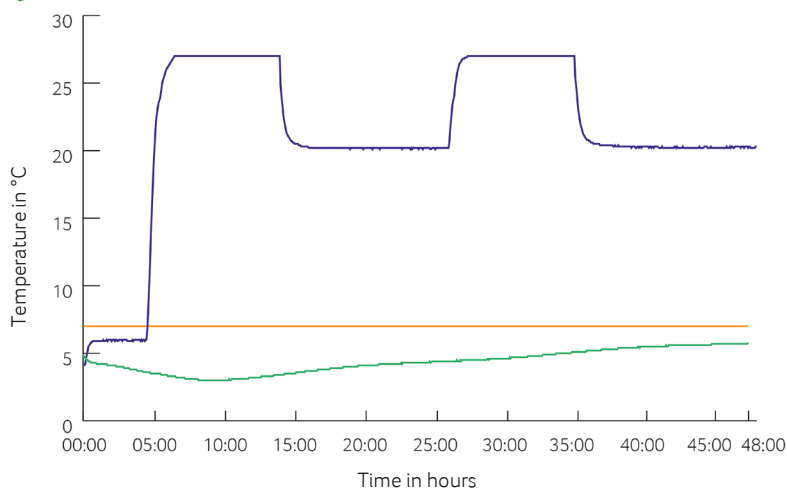
Item number	pf-K-0006
Useable size (L x W x H; mm)	392 x 392 x 381
Weight (g)	891
Construction	Fefco 0201
Quality	BC
Quantity per pallet	140

\*includes 2x paperfloc eco-Liner M46 & shipping box 46



## Assembly instructions

## Climate chamber test\*



- Environmental temperature
- Marking 7°C
- Core temperature paperfloc eco-System M46

\*Performance of the test with the paperfloc eco-System M46 (consisting of 2x paperfloc eco-Liner M46 & shipping box 46, filled with 5,000 g easyAkku Fresh & 13,000 g useful material)