

paperfloc eco-System P10



We use **paper** as a sustainable raw material alternative and emit **95% less CO2** in the production of **paperfloc** than comparable EPS packaging.



Upcycling: We use unmixed production waste from cardboard manufacturing, which already consists of 89% recycled material.



paperfloc is 100% recyclable.

Technical data | paperfloc eco-System P10

Useable volume (litre)	10
Weight (g)	955
Thermal conductivity λ (W/(m·K))	0.039
Disposal	Paper waste
Certificate of conformity	Available

paperfloc eco-Pouch P10

Item number	pfe-P-0002
Insulation material	loose cellulose fibres
Enveloping material	Barrier paper
Size* (L x W; mm)	450 x 400
Weight (g)	560
Percentage of LDPE per Pouch (%)	<3
Quantity per packing unit	144
Quantity per pallet	288

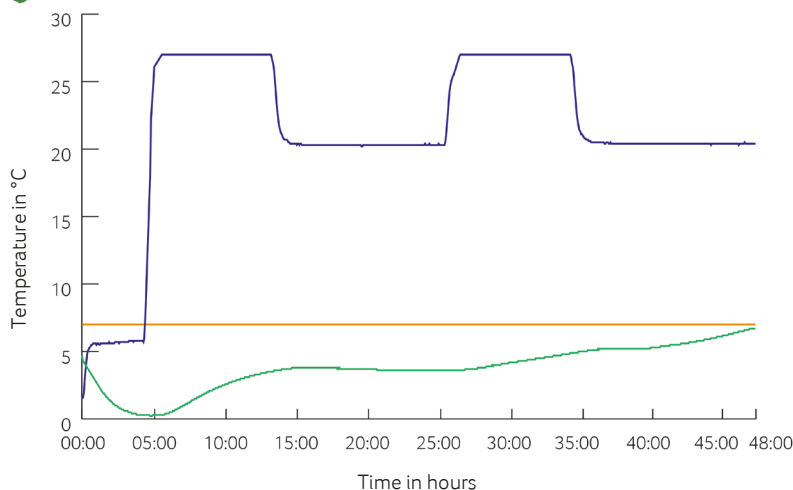
Shipping box 10

Item number	pF-K-0002
Useable size (L x W x H; mm)	352 x 312 x 180
Weight (g)	395
Construction	Fefco 0201
Quality	BE
Quantity per pallet	480



*Delivery takes place as a liner for self-bonding, see **assembly instructions**:

Climate chamber test*



— Environmental temperature
 — Marking 7°C
 — Core temperature paperfloc eco-System P10

*Performance of the test with the paperfloc eco-System P10 (consisting of paperfloc eco-Pouch P10 & shipping box 10, filled with 1,320 g easyAkku Fresh & 1,000 g useful material)