

paperfloc eco-System P15



We use **paper** as a sustainable raw material alternative and emit **95% less CO2** in the production of **paperfloc** than comparable EPS packaging.



Upcycling: We use unmixed production waste from cardboard manufacturing, which already consists of 89% recycled material.



paperfloc is 100% recyclable.

Technical data | paperfloc eco-System P15

Useable volume (litre)	15
Weight (g)	1,275
Thermal conductivity λ (W/(m·K))	0.039
Disposal	Paper waste
Certificate of conformity	Available

paperfloc eco-Pouch P15

Item number	pfe-P-0001
Insulation material	loose cellulose fibres
Enveloping material	Barrier paper
Size* (L x W; mm)	600 x 400
Weight (g)	740
Percentage of LDPE per Pouch (%)	<3
Quantity per packing unit	110
Quantity per pallet	220

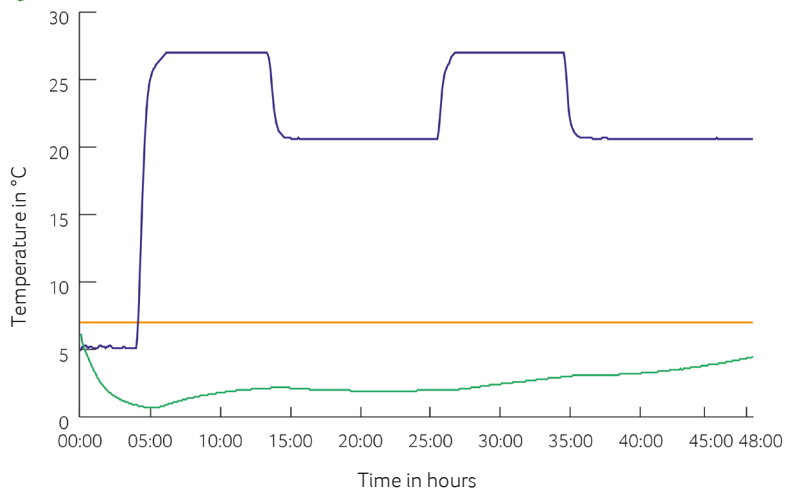
Shipping box 15

Item number	pF-K-0003
Useable size (L x W x H; mm)	442 x 352 x 200
Weight (g)	535
Construction	Fefco 0201
Quality	BE
Quantity per pallet	440



*Delivery takes place as a liner for self-bonding, see **assembly instructions**:

Climate chamber test*



— Environmental temperature
 — Marking 7°C
 — Core temperature paperfloc eco-System P15

*Performance of the test with the paperfloc eco-System P15 (consisting of paperfloc eco-Pouch P15 & shipping box 15, filled with 2,000 g easyAkku Fresh & 3,000 g useful material)