

paperfloc eco-Liner M33 (frozen shipping)



We use **paper** as a sustainable raw material alternative and emit **95% less CO2** in the production of **paperfloc** than comparable EPS packaging.



Upcycling: We use unmixed production waste from cardboard manufacturing, which already consists of 89% recycled material.



paperfloc is 100% recyclable.

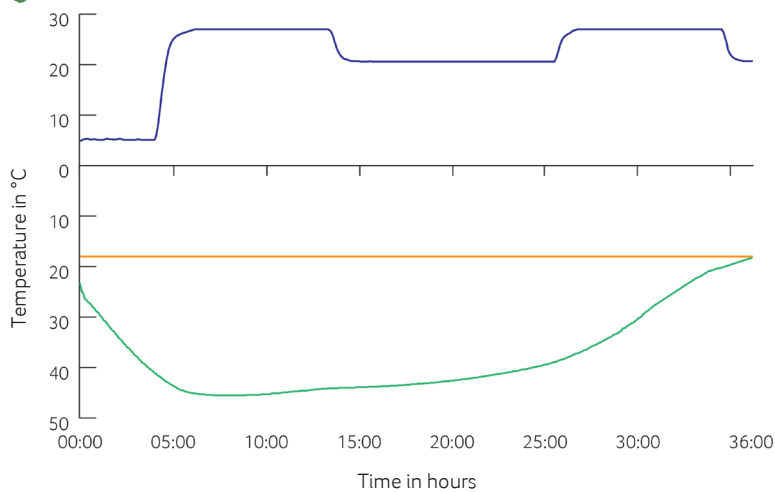
Technical data | paperfloc eco-Liner M33 (frozen shipping)

Item number	10000528
Insulation material	loose cellulose fibres
Enveloping material	Barrier paper
Size (L x B; mm)	1,400 x 400
Weight (g)	1,120
Percentage of LDPE per Pouch (%)	<3
Quantity per packing unit	90
Quantity per pallet	180
Thermal conductivity λ (W/(m·K))	0.039
Disposal	Paper waste
Certificate of conformity	Available

Assembly instructions:



Climate chamber test*



- Environmental temperature
- Marking -18°C
- Core temperature paperfloc eco-System M33 (frozen shipping)

*Performance of the test with the paperfloc eco-System M33 (DF) (consisting of 2x paperfloc eco-Liner M33 (DF) & shipping box 33, filled with 4,500 g dry ice in Dry Ice Extender & 5,000 g useful material)