

paperfloc eco-Pouch P15



We use **paper** as a sustainable raw material alternative and emit **95% less CO2** in the production of **paperfloc** than comparable EPS packaging.



Upcycling: We use unmixed production waste from cardboard manufacturing, which already consists of 89% recycled material.



paperfloc is 100% recyclable.

Technical data | paperfloc eco-Pouch P15

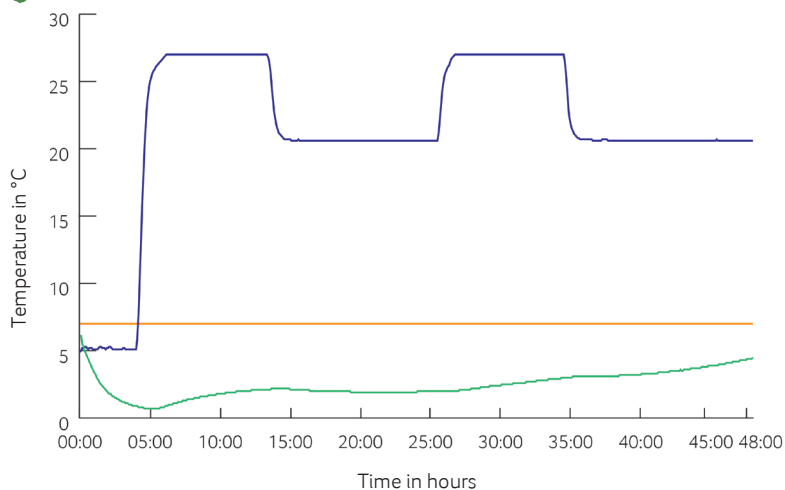
| | |
|--|------------------------|
| Item number | 10000067 |
| Insulation material | loose cellulose fibres |
| Enveloping material | Barrier paper |
| Size* (L x W; mm) | 600 x 400 |
| Weight (g) | 740 |
| Percentage of LDPE per Pouch (%) | <3 |
| Quantity per packing unit | 128 |
| Quantity per pallet | 256 |
| Thermal conductivity λ (W/(m·K)) | 0.039 |
| Disposal | Paper waste |
| Certificate of conformity | Available |



*Delivery takes place as a liner for self-bonding, see **assembly instructions:**



Climate chamber test*



- Environmental temperature
- Marking 7°C
- Core temperature paperfloc eco-System P15

*Performance of the test with the paperfloc eco-System P15 (consisting of paperfloc eco-Pouch P15 & shipping box 15, filled with 2,000 g easyAkku Fresh & 3,000 g useful material)