

# paperfloc eco-Pouch P15 (frozen shipping)



We use **paper** as a sustainable raw material alternative and emit **95% less CO2** in the production of **paperfloc** than comparable EPS packaging.



**Upcycling:** We use unmixed production waste from cardboard manufacturing, which already consists of 89% recycled material.



**paperfloc** is 100% recyclable.

## Technical data | paperfloc eco-Pouch P15 (frozen shipping)

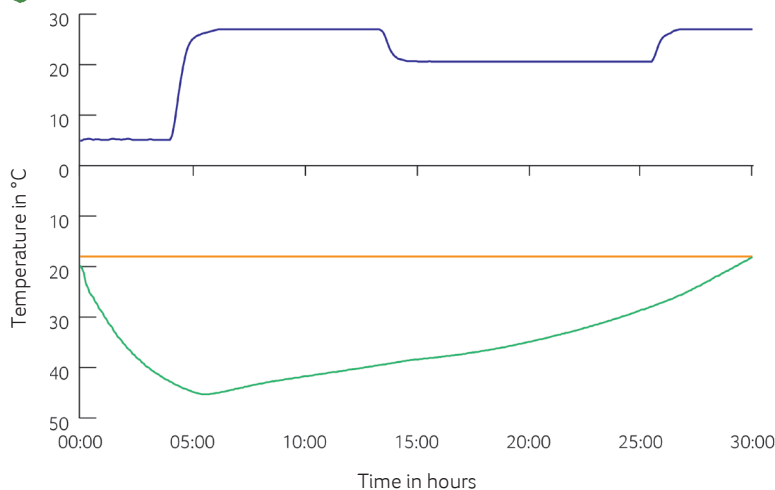
Item number	10000540
Insulation material	loose cellulose fibres
Enveloping material	Barrier paper
Size* (L x W; mm)	600 x 400
Weight (g)	1,020
Percentage of LDPE per Pouch (%)	<3
Quantity per packing unit	104
Quantity per pallet	208
Thermal conductivity $\lambda$ (W/(m·K))	0.039
Disposal	Paper waste
Certificate of conformity	Available



\*Delivery takes place as a liner for self-bonding, see **assembly instructions:**



## Climate chamber test\*



- Environmental temperature
- Marking -18°C
- Core temperature paperfloc eco-System P15 (frozen shipping)

\*Performance of the test with the paperfloc eco-System P15 (DF) (consisting of paperfloc eco-Pouch P15 (DF) & shipping box 15, filled with 3,000 g dry ice in Dry Ice Extender & 2,000 g useful material)