

paperfloc eco-Pouch P3



We use **paper** as a sustainable raw material alternative and emit **95% less CO2** in the production of **paperfloc** than comparable EPS packaging.



Upcycling: We use unmixed production waste from cardboard manufacturing, which already consists of 89% recycled material.



paperfloc is 100% recyclable.

Technical data | paperfloc eco-Pouch P3

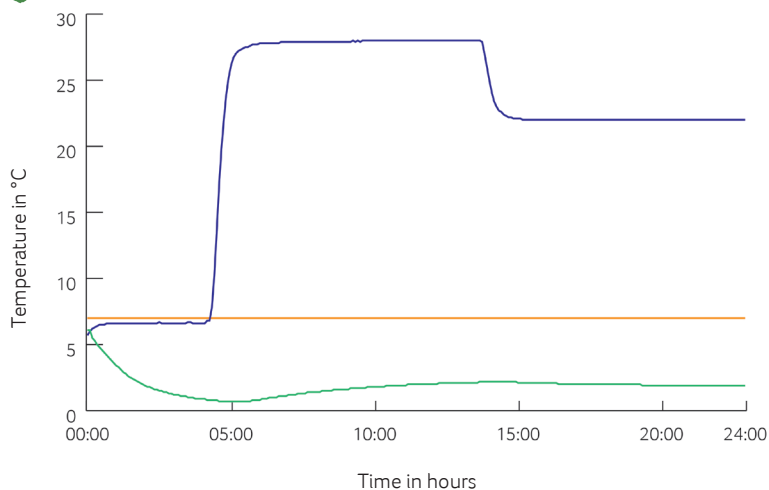
Item number	10000538
Insulation material	loose cellulose fibres
Enveloping material	Barrier paper
Size* (L x W; mm)	300 x 300
Weight (g)	280
Percentage of LDPE per Pouch (%)	<3
Quantity per packing unit	288
Quantity per pallet	576
Thermal conductivity λ (W/(m·K))	0.039
Disposal	Paper waste
Certificate of conformity	Available



*Delivery takes place as a liner for self-bonding, see **assembly instructions:**



Climate chamber test*



- Environmental temperature
- Marking 7°C
- Core temperature paperfloc eco-System P3

*Performance of the test with the paperfloc eco-System P3 (consisting of paperfloc eco-Pouch P3 & shipping box 3, filled with 880 g easyAkku Fresh & 500 g useful material)