

paperfloc eco-System M18



We use **paper** as a sustainable raw material alternative and emit **95% less CO₂** in the production of **paperfloc** than comparable EPS packaging.



Upcycling: We use unmixed production waste from cardboard manufacturing, which already consists of 89% recycled material.



paperfloc is 100% recyclable.

Technical data | paperfloc eco-System M18

Useable size (L x W x H; mm)	264 x 264 x 248
Useable volume (litre)	18
Weight* (g)	1,383
Thermal conductivity λ (W/(m·K))	0.039
Disposal	Paper waste
Certificate of conformity	Available

paperfloc eco-Liner M18

Item number	10000539
Insulation material	loose cellulose fibres
Enveloping material	Barrier paper
Size (L x W; mm)	1,150 x 300
Weight (g)	490
Percentage of LDPE per Pouch (%)	<3
Quantity per packing unit	180
Quantity per pallet	360

Shipping box 18

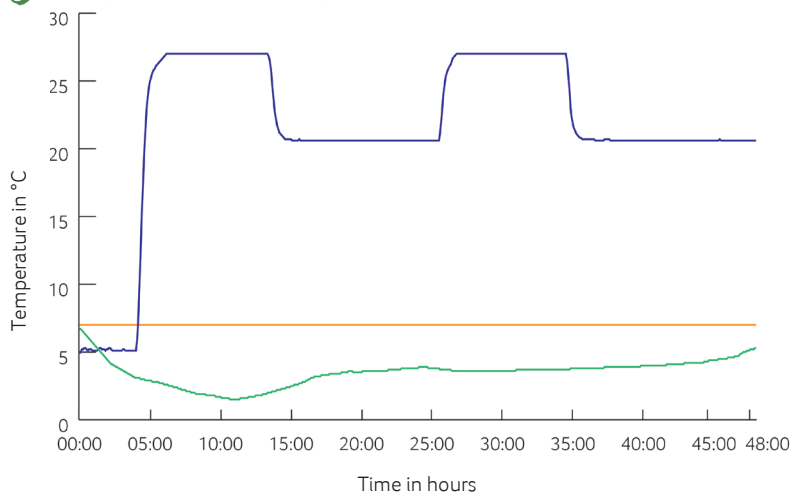
Item number	10000509
Useable size (L x W x H; mm)	294 x 294 x 278
Weight (g)	403
Construction	Fefco 0201
Quality	BE
Quantity per pallet	800

*includes 2x paperfloc eco-Liner M18 & shipping box 18



Assembly instructions

Climate chamber test*



- Environmental temperature
- Marking 7°C
- Core temperature paperfloc eco-System M18

*Performance of the test with the paperfloc eco-System M18 (consisting of 2x paperfloc eco-Liner M18 & shipping box 18, filled with 2,640 g easyAkku Fresh & 4,500 g useful material)