

# paperfloc eco-System M26 (frozen shipping)



We use **paper** as a sustainable raw material alternative and emit **95% less CO2** in the production of **paperfloc** than comparable EPS packaging.



**Upcycling:** We use unmixed production waste from cardboard manufacturing, which already consists of 89% recycled material.



**paperfloc** is 100% recyclable.

## Technical data | paperfloc eco-System M26 (frozen shipping)

Useable size (L x W x H; mm)	352 x 352 x 190
Useable volume (litre)	24
Weight* (g)	2,795
Thermal conductivity $\lambda$ (W/(m·K))	0.039
Disposal	Paper waste
Certificate of conformity	Available

## paperfloc eco-Liner M26 (frozen shipping)

Item number	10000066
Insulation material	loose cellulose fibres
Enveloping material	Barrier paper
Size (L x W; mm)	1,260 x 400
Weight (g)	1,020
Percentage of LDPE per Pouch (%)	<3
Quantity per packing unit	104
Quantity per pallet	208

## Shipping box 26 (frozen shipping)

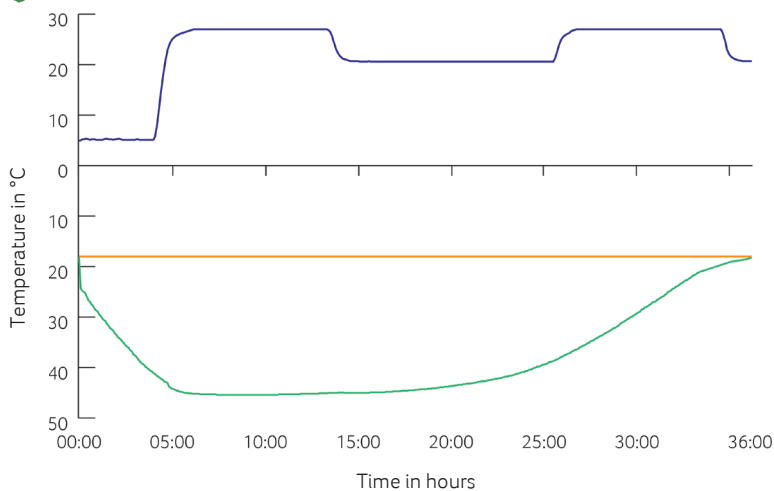
Item number	10000505
Useable size (L x W x H; mm)	392 x 392 x 230
Weight (g)	755
Construction	Fefco 0201
Quality	EB
Quantity per pallet	400

\*includes 2x paperfloc eco-Liner M26 & shipping box 26



Assembly instructions

## Climate chamber test\*



- Environmental temperature
- Marking -18°C
- Core temperature paperfloc eco-System M26 (frozen shipping)

\*Performance of the test with the paperfloc eco-System M26 (DF) (consisting of 2x paperfloc eco-Liner M26 (DF) & shipping box 26, filled with 4,500 g dry ice in Dry Ice Extender & 4,000 g useful material)