

# paperfloc eco-System M46 (frozen shipping)



We use **paper** as a sustainable raw material alternative and emit **95% less CO<sub>2</sub>** in the production of **paperfloc** than comparable EPS packaging.



**Upcycling:** We use unmixed production waste from cardboard manufacturing, which already consists of 89% recycled material.



**paperfloc** is 100% recyclable.

## Technical data | paperfloc eco-System M46 (frozen shipping)

Useable size (L x W x H; mm)	352 x 352 x 341
Useable volume (litre)	42
Weight* (g)	3,630
Thermal conductivity $\lambda$ (W/(m·K))	0.039
Disposal	Paper waste
Certificate of conformity	Available

## paperfloc eco-Liner M46 (frozen shipping)

Item number	10000065
Insulation material	loose cellulose fibres
Enveloping material	Barrier paper
Size (L x W; mm)	1,600 x 400
Weight (g)	1,300
Percentage of LDPE per Pouch (%)	<3
Quantity per packing unit	82
Quantity per pallet	164

## Shipping box 46 (frozen shipping)

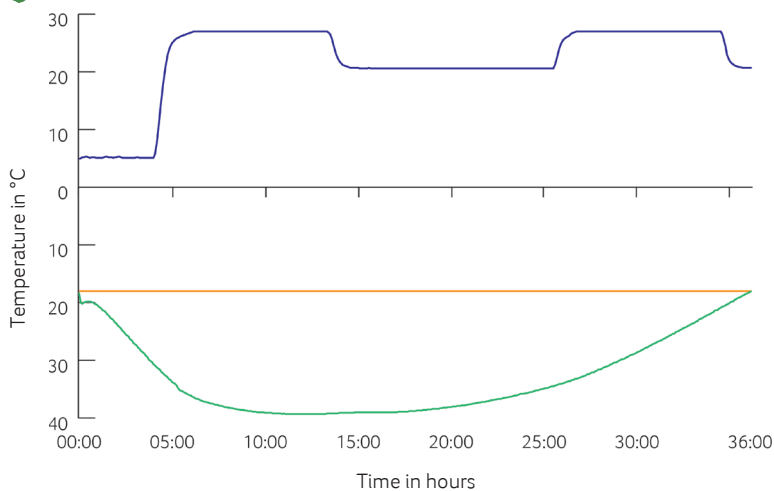
Item number	10000507
Useable size (L x W x H; mm)	392 x 392 x 381
Weight (g)	891
Construction	Fefco 0201
Quality	BC
Quantity per pallet	120

\*includes 2x paperfloc eco-Liner M46 & shipping box 46



Assembly instructions

## Climate chamber test\*



- Environmental temperature
- Marking -18°C
- Core temperature paperfloc eco-System M46 (frozen shipping)

\*Performance of the test with the paperfloc eco-System M46 (DF) (consisting of 2x paperfloc eco-Liner M46 (DF) & shipping box 46, filled with 7,500 g dry ice in Dry Ice Extender & 8,500 g useful material)