

paperfloc eco-System P3



We use **paper** as a sustainable raw material alternative and emit **95% less CO2** in the production of **paperfloc** than comparable EPS packaging.



Upcycling: We use unmixed production waste from cardboard manufacturing, which already consists of 89% recycled material.



paperfloc is 100% recyclable.

Technical data | paperfloc eco-System P3

Useable volume (litre)	3
Weight (g)	721
Thermal conductivity λ (W/(m·K))	0.039
Disposal	Paper waste
Certificate of conformity	Available

paperfloc eco-Pouch P3

Item number	10000561
Insulation material	loose cellulose fibres
Enveloping material	Barrier paper
Size (L x W; mm)	250 x 300 (add. flap)
Weight (g)	280
Percentage of LDPE per Pouch (%)	<3
Quantity per packing unit	288
Quantity per pallet	576

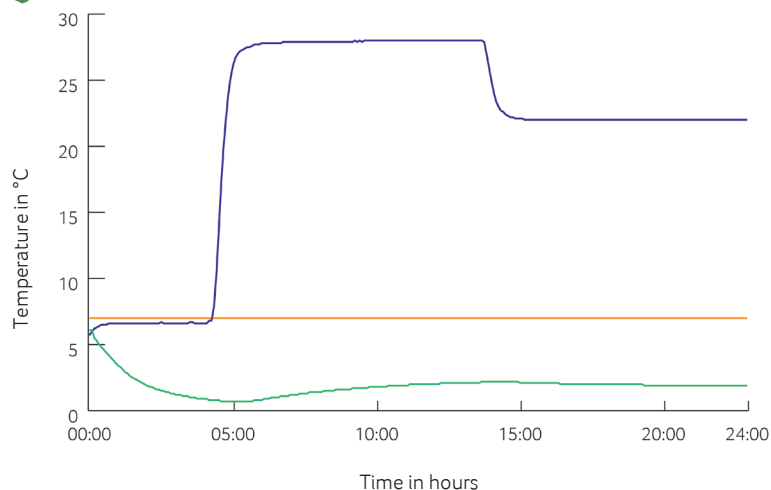
Shipping box 3

Item number	10000104
Useable size (L x W x H; mm)	280 x 240 x 120
Weight (g)	161
Construction	Fefco 0201
Quality	B
Quantity per pallet	1,300



Assembly instructions:

Climate chamber test*



— Environmental temperature
 — Marking 7°C
 — Core temperature paperfloc eco-System P3

*Performance of the test with the paperfloc eco-System P3 (consisting of paperfloc eco-Pouch P3 & shipping box 3, filled with 880 g easyAkku Fresh & 500 g useful material)