

# paperfloc eco-System P5



We use **paper** as a sustainable raw material alternative and emit **95% less CO2** in the production of **paperfloc** than comparable EPS packaging.



**Upcycling:** We use unmixed production waste from cardboard manufacturing, which already consists of 89% recycled material.



**paperfloc** is 100% recyclable.

## Technical data | paperfloc eco-System P5

Useable volume (litre)	5
Weight (g)	584
Thermal conductivity $\lambda$ (W/(m·K))	0.039
Disposal	Paper waste
Certificate of conformity	Available

## paperfloc eco-Pouch P5

Item number	10000076
Insulation material	loose cellulose fibres
Enveloping material	Barrier paper
Size (L x W; mm)	250 x 400 (add. flap)
Weight (g)	390
Percentage of LDPE per Pouch (%)	<3
Quantity per packing unit	206
Quantity per pallet	412

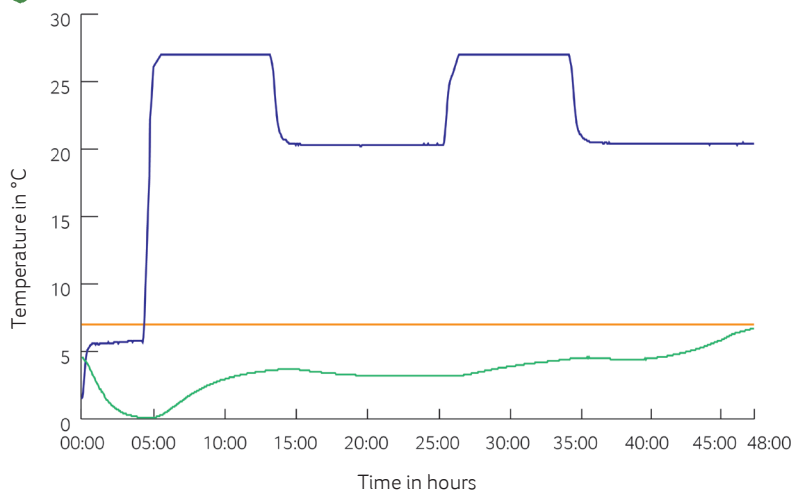
## Shipping box 5

Item number	10000079
Useable size (L x W x H; mm)	352 x 242 x 160
Weight (g)	194
Construction	Fefco 0201
Quality	B
Quantity per pallet	1,300



Assembly instructions:

## Climate chamber test\*



— Environmental temperature  
 — Marking 7°C  
 — Core temperature paperfloc eco-System P5

\*Performance of the test with the paperfloc eco-System P5 (consisting of paperfloc eco-Pouch P5 & shipping box 5, filled with 1,320 g easyAkku Fresh & 500 g useful material)